

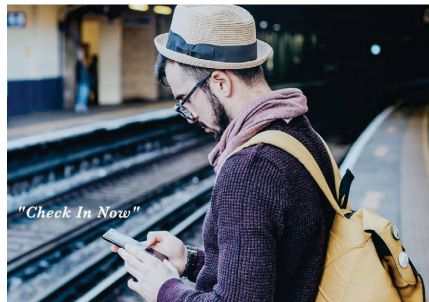


sobr^{safe}™ and VCheck24



APPLICATIONS FOR... VCHECK24 or SOBRSAFE PRODUCTS EITHER ON THEIR OWN or WORKING TOGETHER, WOULD BE...

Commercial Transport and Delivery Drivers, Industrial Manufacturing Facilities, Pretrial Bail, Probation, Re-Entry & Step-Down Programs, Rehab Programs and Rehabilitation Facilities, Family, Youth, Drug, and Criminal DUI Court, just to name a few.



**WHETHER YOU'RE USING THE SOBRSAFE'S NEXT GENERATION ALCOHOL
DETECTION or VCHECK'S SMARTPHONE MONITORING / SUPERVISION,
YOU CAN BE SURE THEY'LL PROVIDE THE SOLUTIONS YOU'RE LOOKING FOR.**

- **SOBRsafe's** advanced transdermal technology detects and reports (in real-time) the presence of alcohol emitted through a user's skin - no breath, blood or urine samples required.
- **VCheck24's** technology is specifically to be used by smartphones and includes facial and voice recognition, video check-ins, continuous GPS tracking, customizable check-in schedules, geo-zone creation, client messaging, as well as auto daily and/or weekly activity and alarm reporting.

For further information please...

Phone: 604-820-7754 or 888-850-9691 or Email: info@tratek.ca

Website: www.tratek.ca



ABOUT VCHECK24:

With the benefits of VCheck24's continuous GPS tracking, flexible geo-zone creation, zone triggered VChecks, plus, on-demand scheduled, and recurring in-app messaging and polling with your client, you can remain in constant contact with them, alert them to upcoming appointments, recurring treatment sessions, and even remind them when it's time to take their prescribed medication.

In a rehabilitative capacity the handing over of an additional level of personal responsibility to bridge the gap between inpatient and outpatient care. The freedoms of outpatient rehabilitation often come with the risk of veering off course with treatment. When a patient enters or leaves a pre-defined zone of interest (such as home, work, the gym, or treatment facility), they are prompted to check in. Multiple parties may receive a text and/or e-mail alert when a zone is entered or exited, and when that patient completes the VCheck. In this way, VCheck24 provides a steppingstone toward increased accountability and the freedoms of outpatient rehabilitation. It provides the individual an opportunity to prove responsible decision-making while earning advancement through the rehab program.

ABOUT SOBRSAFE:

Alcohol misuse is a leading cause of preventable death, yet prevention and monitoring solutions have not kept pace with this epidemic. Earlier technologies are invasive and inefficient, unhygienic, and unconnected. There must be a better way.

Enter SOBRsafe, our advanced transdermal (touch-based) technology detects and instantaneously reports the presence of alcohol as emitted through a user's skin - no breath, blood or urine sample is required. With a powerful backend data platform, SOBRsafe provides next generation passive detection technology for licensing and integration, behavioral health, judicial, and consumer markets.

SOBRsure is a game-changing, fitness-style wristband for advanced alcohol safety, support, and recovery. The key features include privacy wearable alcohol detection, continuous remote monitoring, app-based reporting, GPS tracking, wrist monitor removal alerts, 3-day battery life, comfortable adjustable band, two band sizes: 8.25" and 10.5", easy-charge dock, and USB power cable.

SOBRsure's innovative, continuous remote alcohol monitoring technology is the new compelling solution for mandated monitoring. No administered or scheduled testing... just wear it and live life. Individuals who are monitored for five years post-treatment have a recovery rate of up to 92%, as opposed to the average five-year recovery rate of just 30%.

SOBRsure's technology makes it easy for companies, families, or professionals to monitor progress while the application provides alcohol detection alerts, pinpoint location tracking, band removal notifications, and is available for both point-of-care screening (SOBRcheck) and continuous monitoring(SOBRsure).